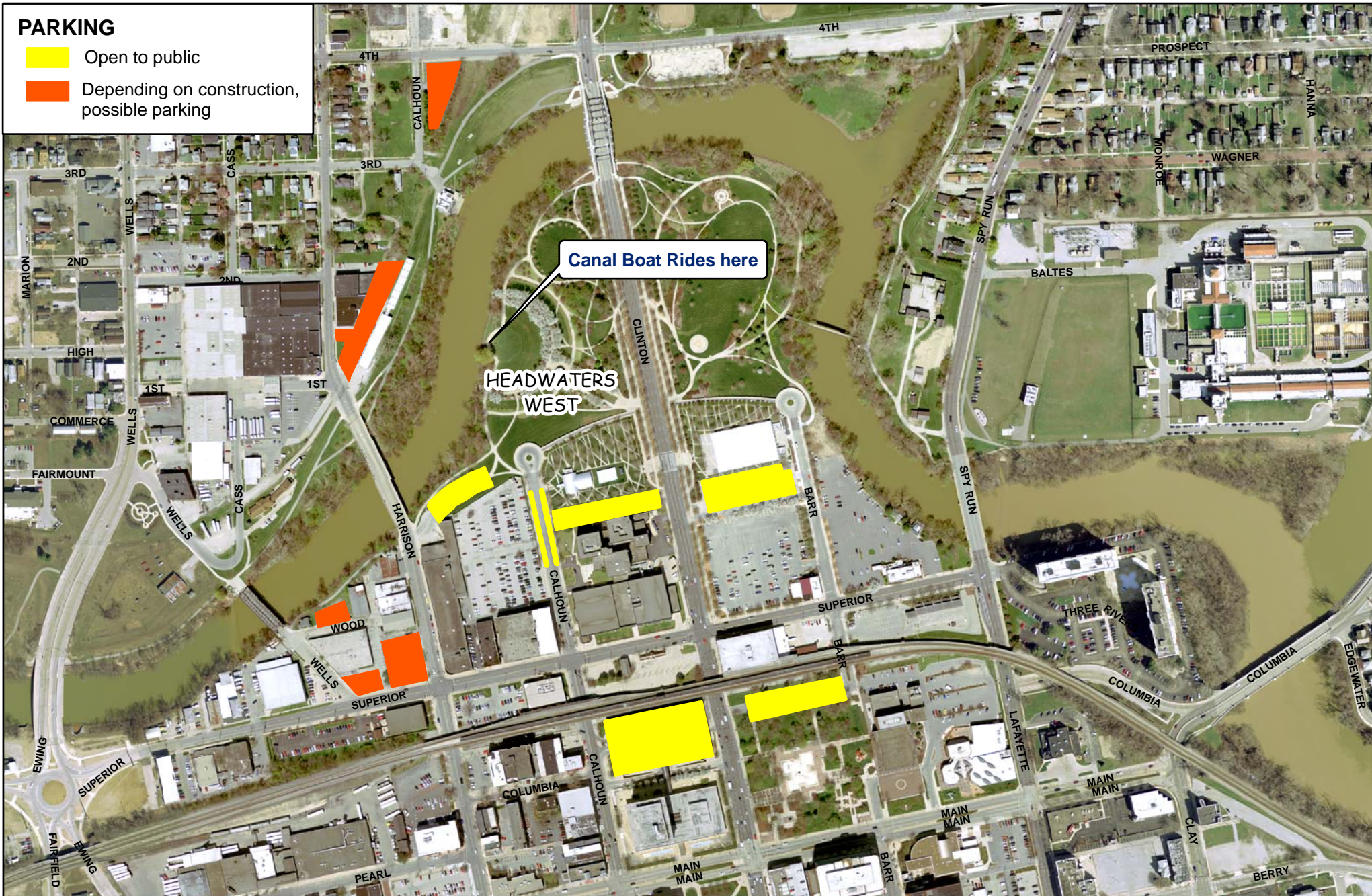


PARKING FOR CANAL BOAT TOURS

PARKING

- Open to public
- Depending on construction, possible parking



Although strict accuracy standards have been employed in the compilation of this map, Fort Wayne City CDD GIS does not warrant or guarantee the accuracy of the information contained herein and disclaims any and all liability resulting from any error or omission in this map.
 North American Datum 1983
 State Plane Coordinate System, Indiana East

Document Path: G:\Planning\Riverfront Study\Three Rivers Pontoon Rides\Pontoon_parking_my.mxd



Created July 2, 2017
 FW CDD GIS-my

0 0.01250.025 0.05 0.075
 Miles